

# DOUBLE SERVICE GUARANTEE\* WITH ASSURED HIGHER MILEAGE!



GET A 36-HOUR  
GUARANTEED TURNAROUND AT  
OUR WORKSHOP OR GET ₹3,000 PER DAY.\*



GET BACK ON THE ROAD  
IN 48 HOURS OR  
GET ₹1,000 PER DAY.\*





# ASSURED HIGHER MILEAGE, NO MATTER WHICH MAHINDRA FURIO YOU CHOOSE.

Whatever you transport with the Mahindra FURIO, you will bring in more profits with assured higher mileage. Be it Fruits, Vegetables, Milk, Industrial Goods, Auto Components, Market Load, E-Commerce and FMCG, the Mahindra FURIO is built to outperform on the road and in the account books too. All thanks to the mDi Tech engine and the FuelSmart technology which work together to optimise fuel-efficiency, the overall comfort and a driving experience that is nothing less than world-class. More than anything, the assurance of Higher Mileage and Double Service Guarantee makes every Mahindra FURIO truly incomparable. Pininfarina in Italy is the design arm of Mahindra and one of the greatest names in automotive



DISCOVER THE  
HEART OF THE  
FURIO ICVs.

**mDi Tech**

3.5 litre mDi Tech  
FuelSmart engine

## RUGGED AGGREGATES FOR UNFAILING RELIABILITY.

MILEAGE AND POWER AT  
THE TOUCH OF A SWITCH.



**FUELSMART**



6 Speed Gearbox



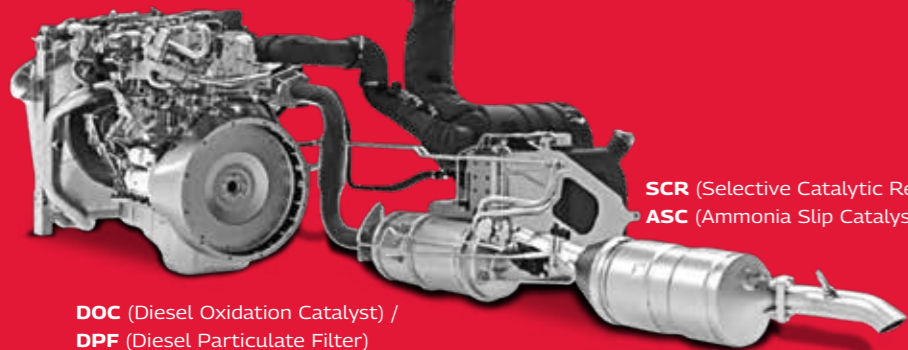
362 mm diameter organic clutch



Heavy-duty Rear Axle (Meritor/ Dana)

MAHINDRA **BS6** AFTER TREATMENT SYSTEM.  
LOWER AdBlue CONSUMPTION MEANS HIGHER EARNINGS.

EGR (Exhaust Gas Recirculation)



DOC (Diesel Oxidation Catalyst) /  
DPF (Diesel Particulate Filter)

SCR (Selective Catalytic Reduction) /  
ASC (Ammonia Slip Catalyst)

Proven Bosch ATS System



ANY TERRAIN, NO PROBLEM. ANY WEIGHT, NO PROBLEM.



Heavy-duty suspension



I Section and Tubular type chassis member leads to superior strength.

**FURIO<sub>11</sub>**

DELIVERS MORE GOODS,  
DELIVERS MORE EARNINGS.

- Suited for every business application need with two cargo body length options
- Guaranteed offerings in Service

MODEL	FURIO 11
GVW	11280 kg
Engine	mDi Tech, 4 cylinder, BS-VI (With EGR + SCR Technology)
Maximum Power	103 kW @ 2400 r/min
Maximum Torque	525 Nm @ 1250 - 1800 r/min (with multi-mode)
Transmission	6 speed Overdrive Synchro Gearbox
Tyres	235/75 R 17.5
Fuel Tank Capacity (litre)	160
Cabin	2.05 m Day with Blower
Variant	HSD (CBC option available)
Wheelbase	4000 mm, 4950 mm
Internal loadbody size	HSD Length x Width x Height - 5334 mm x 2135 mm x 1745 mm. Also available in 5791 mm, 6096 mm, 6711 mm length option.

PARCELS & LOGISTICS



FMCG



INDUSTRIAL GOODS



AUTO COMPONENTS



WHITE GOODS



E-COMMERCE



PERFECT FOR  
FRUITS & VEGETABLES



MARKET LOADS



PETROLEUM, OIL & LUBRICANTS



**FURIO<sub>12</sub>**

DELIVERS PRODUCTS FRESH AND  
PRESERVES EARNINGS TOO.

- Suited for every business application need with multiple cargo body length options
- Guaranteed offerings in Service

MODEL	FURIO 12
GVW	11990 kg
Engine	mDi Tech, 4 cylinder, BS-VI (With EGR + SCR Technology)
Maximum Power	103 kW @ 2400 r/min
Maximum Torque	525 Nm @ 1250 - 1800 r/min (with multi-mode)
Transmission	6 speed Overdrive Synchro Gearbox
Tyres	8.25 R 20
Fuel Tank Capacity (litre)	190
Cabin	2.05 m Day with Blower
Variant	HSD (CBC option available)
Wheelbase	4500 mm, 5100 mm, 5450 mm
Internal loadbody size	HSD Length x Width x Height - 5796 mm x 2135 mm x 1900 mm. Also available in 6100 mm, 6711 mm and 7320 mm length options and 2288 mm width option.

PHARMA



FISH



MILK



MILK PRODUCTS



PARCELS & LOGISTICS



FMCG



INDUSTRIAL GOODS



PERFECT FOR  
AUTO COMPONENTS



E-COMMERCE



FRUITS & VEGETABLES



MARKET LOADS



PETROLEUM, OIL & LUBRICANTS





## FURIO<sub>14</sub>

### DELIVERS MARKET LOADS AND INDUSTRIAL GOODS EFFICIENTLY.

- Suited for every business application need with multiple cargo body length options
- Guaranteed offerings in Service



MODEL	FURIO 14
GVW	14050 kg
Engine	mDi Tech, 4 cylinder, BS-VI (With EGR + SCR Technology)
Maximum Power	103 kW @ 2400 r/min
Maximum Torque	525 Nm @ 1250 - 1800 r/min (with multi-mode)
Transmission	6 speed Overdrive Synchro Gearbox
Tyres	8.25 R 20
Fuel Tank Capacity (litre)	190 (160 litre Optional)
Cabin	2.05 m Day with Blower
Variant	HSD (CBC option available)
Wheelbase	4500 mm, 5100 mm, 5450 mm
loadbody size	HSD Length x Width x Height - 5796 mm x 2135 mm x 1900 mm. Also available in 6100 mm, 6711 mm and 7320 mm length options and 2288 mm width option.

- PERFECT FOR
- PARCELS & LOGISTICS
  - FRUITS & VEGETABLES
  - INDUSTRIAL GOODS
  - AUTO COMPONENTS
  - MARKET LOADS
  - TEXTILES
  - CONTAINER
  - REEFER
  - PETROLEUM, OIL & LUBRICANTS

## FURIO<sub>16</sub>

### NOW EXPERIENCE COMFORT AND SAFETY ON EVERY JOURNEY.

- Suited for every business application need with multiple cargo body length options
- Guaranteed offerings in Service



MODEL	FURIO 16
GVW	16140 kg
Engine	mDi Tech, 4 cylinder, BS-VI (With EGR + SCR Technology)
Maximum Power	103 kW @ 2400 r/min
Maximum Torque	525 Nm @ 1250 - 1800 r/min (with multi-mode)
Transmission	6 speed Overdrive Synchro Gearbox
Tyres	9.0 R 20 - 16PR
Fuel Tank Capacity (litre)	235
Cabin	2.05 m Sleeper with Blower (2.05 m Day Cabin Optional)
Variant	HSD (CBC option available)
Wheelbase	4500 mm, 4900 mm, 5300 mm, 5450 mm
Internal loadbody size	HSD Length x Width x Height - 5798 mm x 2288 mm x 1980 mm. Also available in 6098 mm, 6711 mm and 7315 mm length, 2374 mm width and 1900 mm height option.

- PERFECT FOR
- PARCELS & LOGISTICS
  - FRUITS & VEGETABLES
  - INDUSTRIAL GOODS
  - AUTO COMPONENTS
  - MARKET LOADS
  - CONTAINER
  - REEFER
  - PETROLEUM, OIL & LUBRICANTS

## FURIO<sub>14</sub> HD

### CARRIES HEAVY LOADS AND DELIVERS GOODS EFFORTLESSLY.

- Suited for every business application need with shorter cargo body length options
- Guaranteed offerings in Service



MODEL	FURIO 14 HD
GVW	13100 kg
Engine	mDi Tech, 4 cylinder, BS-VI (With EGR + SCR Technology)
Maximum Power	103 kW @ 2400 r/min
Maximum Torque	525 Nm @ 1250 - 1800 r/min (with multi-mode)
Transmission	6 speed Overdrive Synchro Gearbox
Tyres	8.25 X 20
Fuel Tank Capacity (litre)	160
Cabin	2.05 m Day with Blower
Variant	HSD (CBC, FSD & DSD options available)
Wheelbase	4100 mm, 3450 mm
Internal loadbody size	Length x Width x Height - 5185 mm x 2135 mm x 1900 mm (HSD)/ 600 MM (DSD). Also available in 4270 mm length option.

- PERFECT FOR
- CONSTRUCTION SEGMENTS
  - CEMENT
  - BRICKS
  - LATERITE STONES
  - TILES
  - PETROLEUM, OIL & LUBRICANTS

## FURIO<sub>17</sub>

### HIGHER PAYLOAD LEADS TO HIGHER EARNINGS.

- Suited for Voluminous Goods application need with multiple cargo body length options
- Guaranteed offerings in Service



MODEL	FURIO 17
GVW	17000 kg
Engine	mDi Tech, 4 cylinder, BS-VI (With EGR + SCR Technology)
Maximum Power	103 kW @ 2400 r/min
Maximum Torque	525 Nm @ 1250 - 1800 r/min (with multi-mode)
Transmission	6 speed Overdrive Synchro Gearbox
Tyres	Tubeless Tyres STD Fitment 275/80 R 22.5
Fuel Tank Capacity (litre)	235
Cabin	2.05 m Sleeper with Blower (2.05 m Day Cabin Optional)
Variant	HSD (CBC option available)
Wheelbase	5450 mm
Internal loadbody size	HSD Length x Width x Height - 7315 mm x 2288 mm x 1980 mm. Also available in 2374 mm width and 1900 mm height option.

- PERFECT FOR
- PARCELS & LOGISTICS
  - E-COMMERCE
  - FMCG
  - REEFER
  - MARKET LOADS
  - CONTAINER
  - PETROLEUM, OIL & LUBRICANTS



## A WORLD-CLASS DRIVING EXPERIENCE.

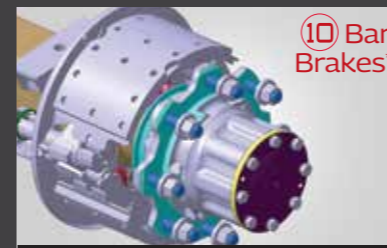


8 Air Vents - Industry First Offering,  
4 Spoke Tilt and Telescopic Power Steering



Ergonomically Designed Cabin, Lower Rake Angle

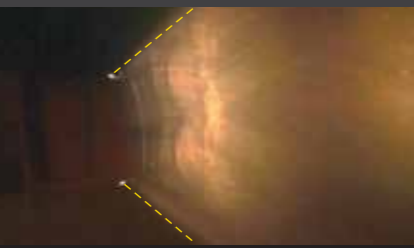
## ENHANCED SAFETY FOR HIGHER UPTIME AND MORE EARNINGS.



Lower Stopping Distance



Dual Chamber Headlamps and Wide Spread Fog Lamps for Better Night Vision and Around Turns



Perfect for Indian Road Conditions. Provides Better Comfort and Safety to Drivers.



HSLA Chassis for Better Strength



Anti-Roll Bar (ARB) for Better Stability



Tubeless and Radial Tyres\* for High Speed Capacity, Better Stability and Puncture Resistance.



Wire Mesh for Fuel Theft Protection



Best-in-class interior volume energy absorbing mounts broader cabin sections

## MAXIMUM COMFORT LEADS TO MAXIMUM EARNINGS.

Industry First Offering



Day Cabin



Ensures Basic Level of Comfort for Drivers during Stopovers, Walk-Through Cabin



Lounging Arrangement for Driver and Co-Driver



Driver to rest during Stopovers and Co-Driver during the Drive



Sleeper Cabin



Spacious Cabin: Sleeper Berth: 1750 mm X 500 mm, Easy Access



## MORE CONVENIENCE MEANS MORE PRODUCTIVITY MEANS MORE PROFITS.



Driver Information System (DIS)



Robust Front End Structure



Provision for Aerokit and Roof Luggage Carrier (RLC)



Side Ladder for Easy Climbing



Lockable Storage



Door with Utility Pocket and Speaker Provision

READY TO USE FROM DAY ONE. EASY TO MODIFY FOR ANY APPLICATION.

MULTIPLE BODY LENGTH OPTIONS | PANELS WITH HSLA (HIGH - STRENGTH LOW - ALLOY STEEL) 420 MATERIAL | ADEQUATE SUPER STRUCTURE HEIGHT | DENSE PITCHSIDE PILLARS ROBUST STRUCTURE

\*Not applicable for FURIO 11 and 14HD as standard fitment.

\*FURIO 11-8 bar. \*\*Furio 14 HD-Cross ply tyres.



## KEY FEATURES

-  **100% RELIABILITY** Mahindra iMAXX is backed by artificial intelligence so you get accurate results every day.
-  **ZERO DATA LOSS** It's equipped with a bigger battery and memory to store data. In addition, it also works on all generations - 4G, 3G and even 2G.
-  **PERSONALISATION** As your business evolves, so does our technology to suit all your needs.
-  **SMART REPORTS** Gives analytical insights and reports regularly to monitor and grow your business.



## OUR SERVICE GUARANTEES

-  GET BACK ON ROAD IN **48 HOURS** OR GET **₹1,000 PER DAY**.\*
-  GET A **36-HOUR** GUARANTEED TURNAROUND AT OUR WORKSHOPS OR GET **₹3,000 PER DAY**.\*



 <p><b>MAHINDRA AASHRAY MAKES EVERY MOMENT CAREFREE.</b></p>	 <p><b>Mahindra MCOVER Makes You Feel 3 Times More Secure.</b></p>
 <p><b>Pre-owned Commercial Vehicles</b></p> <ul style="list-style-type: none"> <li>• UP TO 12 MONTHS WARRANTY* • 1/2/3 STAR RATINGS*</li> <li>• UP TO 3 FREE SERVICES* • ROADSIDE ASSISTANCE*</li> <li>• REFINANCE OPTIONS*</li> </ul>	

For details, please contact: 1800 200 3635

- Corporate: [contactmtb@mahindra.com](mailto:contactmtb@mahindra.com) Customer Care: [now24x7@mahindra.com](mailto:now24x7@mahindra.com)
- [www.mahindratruckandbus.com](http://www.mahindratruckandbus.com)
- Mahindra & Mahindra Ltd., Truck and Bus Division, Marketing Division, 2nd Floor, Mahindra Towers, Worli, Mumbai 400 018.
- SMS 'MTB' to 56767

 <p><b>1800-200-3600</b> 24/7 VEHICLE ASSISTANCE BY EXPERTS A MULTILINGUAL SERVICE</p>	 <p><b>MOBILE SERVICE VANS &amp; WORKSHOPS</b></p>	 <p><b>COUNTRY-WIDE SPARES &amp; SERVICE NETWORK</b></p>
---	---	---

Note: In view of our policy of continuously improving our products, we reserve the right to alter specifications or design without prior notice and without liability. Illustrations do not necessarily show the vehicle in its standard form. Accessories shown are not part of the standard equipment. Colour shades shown may vary. E. & O.E.

DEALER STAMP

\*For more details of this guarantee, visit [www.mahindratruckandbus.com](http://www.mahindratruckandbus.com)